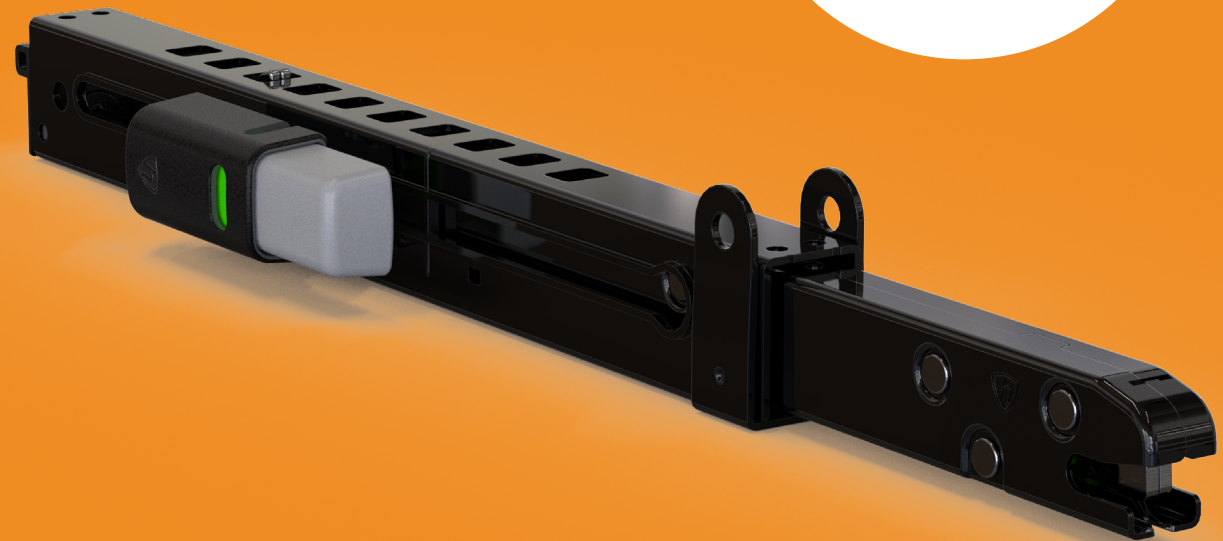


Lightweight Isofix Arms

A complete
fastening
solution ready to be
designed in!



Overview and general advices



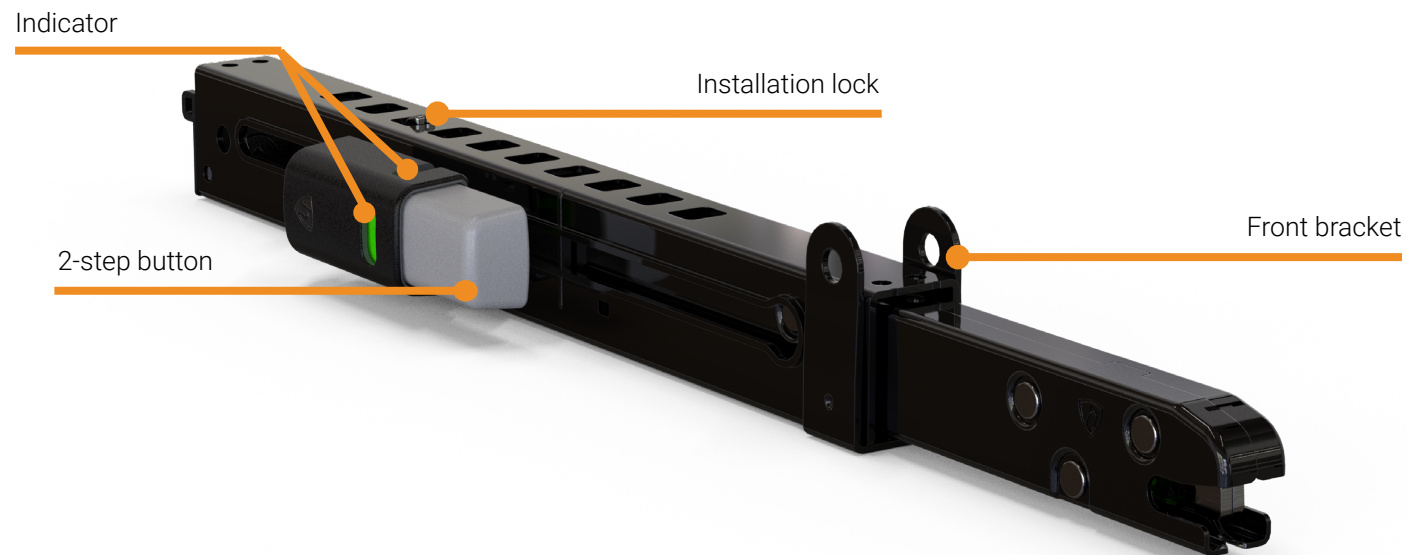
Lightweight Isofix Arms

The complete fastening solution

With an unprecedented strength to weight ratio, all functions inside the arms, low release forces, customizable mounting and optional output for indication, Holmbergs Lightweight Isofix Arms have all you need for your next child car or booster seat.

Contact our R&D department to start the design in process!

The Lightweight Isofix Arms are designed to **save weight without compromising on strength and safety.**

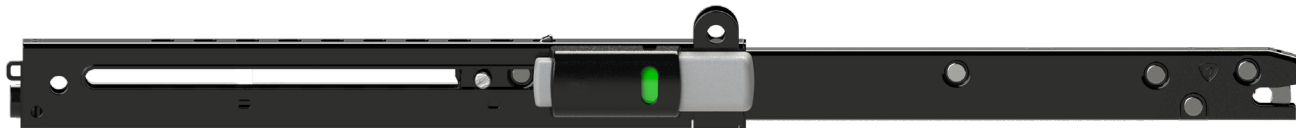




Main function



Pull out. Push the 2-step button to manually pull out the Isofix Arm from storage position. Installation lock is active.



Lock. Lock the Isofix Arm by pushing it towards the Isofix bar in the vehicle. When the Isofix Arm connects to an Isofix bar in the vehicle the installation lock is disabled. The indicator on the button switches to green.



Push. The Isofix Arm can now be adjusted to suitable length by pushing it towards the seat.

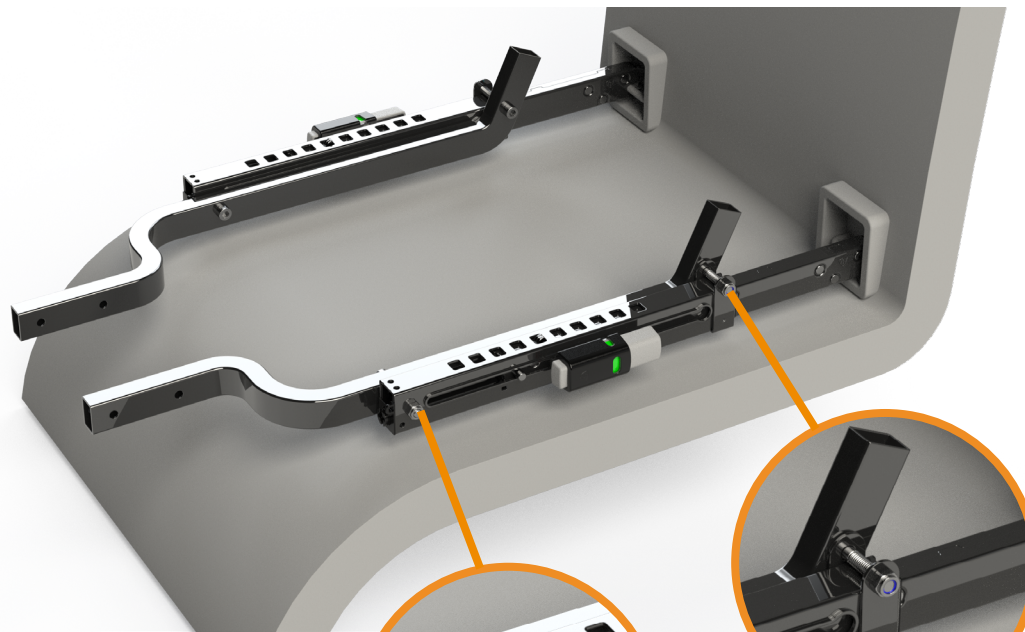


Release. To release the Isofix Arm push the 2-step button and pull it back to the storage position.



Mounting / fastening points

The main load bearing mounting point is the hole through the Isofix Arm **(1)**. In addition to this hole the arm can be supported in the front **(2)**, with a screw through the front bracket.



1) Mandatory mounting
M6 Screw or Axle

2) Optional mounting
M6 Screw or Axle
Customizable front bracket

Indicator output

Rotating wheel

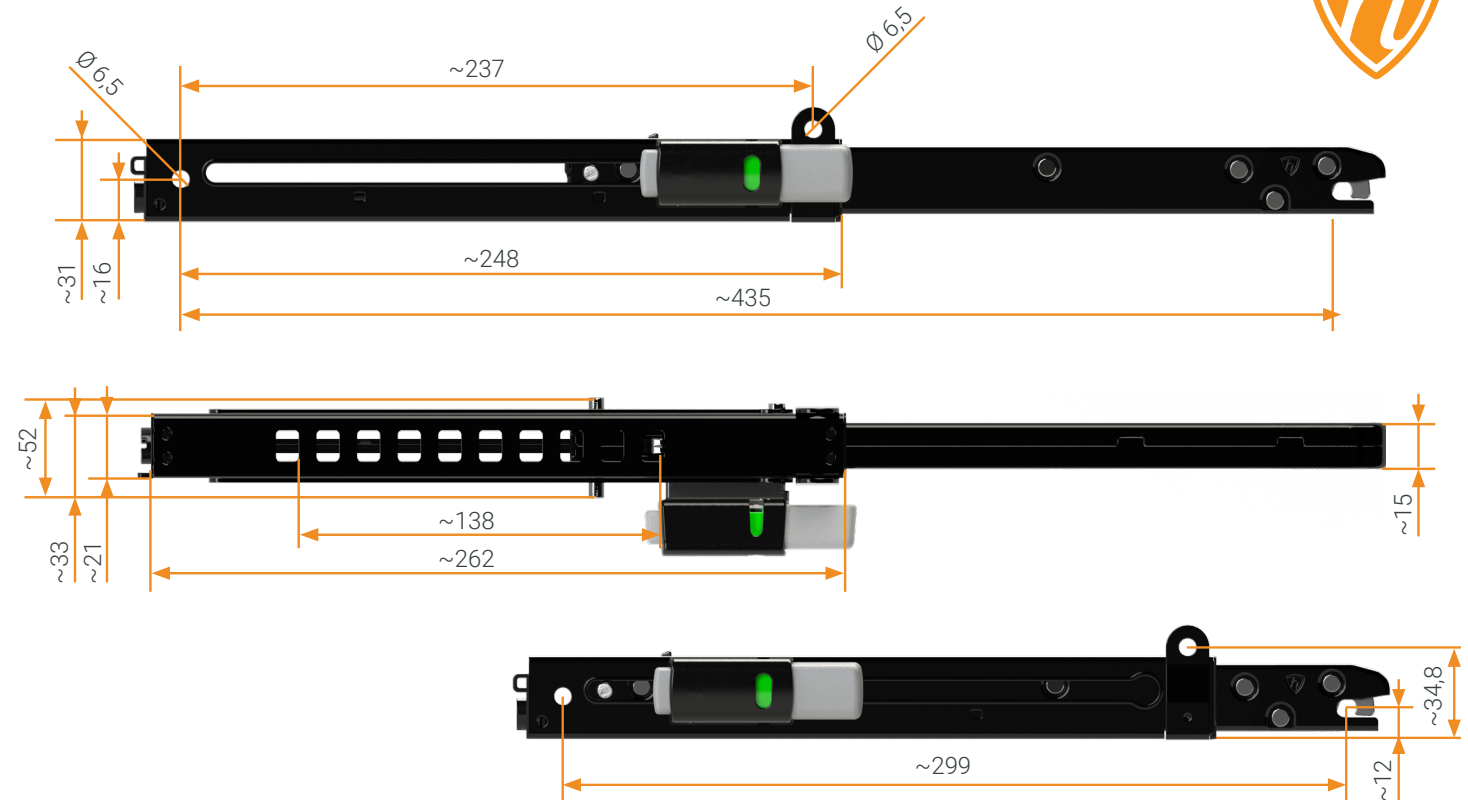
Interface for mechanical movement for open/close indication.





Dimensions

All dimensions are in mm.



Technical data / info

Isofix Arm specifications
Weight 515 g
Adjustment 140 mm
Low force 2-step button with green indicator
Fulfills R129 and RoHS
2D and 3D data available (contact our R&D Department)

NOTE: This information is intended to support an implementation in our customers' products. Verification of proper function in the customer application is the customer's responsibility. This information is not intended for end users and shall not be shared with other parties without prior approval from Holmbergs Safety System.

Add-on Holmbergs DigitalSafety™

The Lightweight Isofix Arms can be easily connected to our DigitalSafety™ system.

Holmbergs DigitalSafety™ is the world's first fully-integrated digital safety solution bringing a whole new element to child car seat safety; connected communication.

By connecting Lightweight Isofix Arms to Holmbergs DigitalSafety™, you could help your customers with easier car seat installation showing them when the arms are fastened correctly in the seat.

You can also add several sensors in your Holmbergs DigitalSafety system, such as e-Buckle™, support leg and more. Help parents know when the buckle opens during the ride or when the seat is connected in the base and used in correct position. And there is much more.

Holmbergs DigitalSafety™ - endless possibilities for your smart car seat!

e-Isofix Arm specifications

Connector: JST BM02B-GHS

Unlatched = Open circuit. Latched = Closed circuit.

Cable connectors: (both ends) : JST GHR-02V-S

Cable length: 300mm / 600mm

Cable outer diameter: 1.6mm



Circuit board

Connect with cable into the circuit board to get a signal for open/close indication.



Holmbergs®
DigitalSafety™



Holmbergs Safety System Holding AB

P.O. Box 850
SE-301 18 Halmstad
Sweden

info@holmbergs.se

www.holmbergs.se

